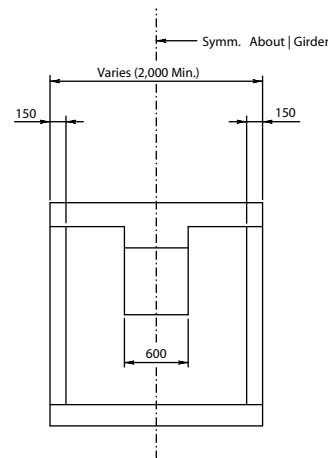


CROSS SECTION



SECTION A-A

NOTES:

1. The weight given is for the diaphragm only. The Total segment weight is the weight of the diaphragm plus the weight for the cross-section listed on the segment dimension sheets. The weight given is for the minimum segment length of 2.000 M. The Additional weight given is the increase in diaphragm weight per additional 1.000 M. increase in segment length.

Section Type	'A' (mm)	'B' (mm)	'C' (mm)	Weight (KN)	Add. Weight (KN)
1800-1	171	625	460	173	98
1800-2	239	1,230	716	179	95
2100-1	116	615	570	212	120
2100-2	176	1,201	869	219	117
2400-1	74	598	683	251	143
2400-2	128	1,167	1026	259	139