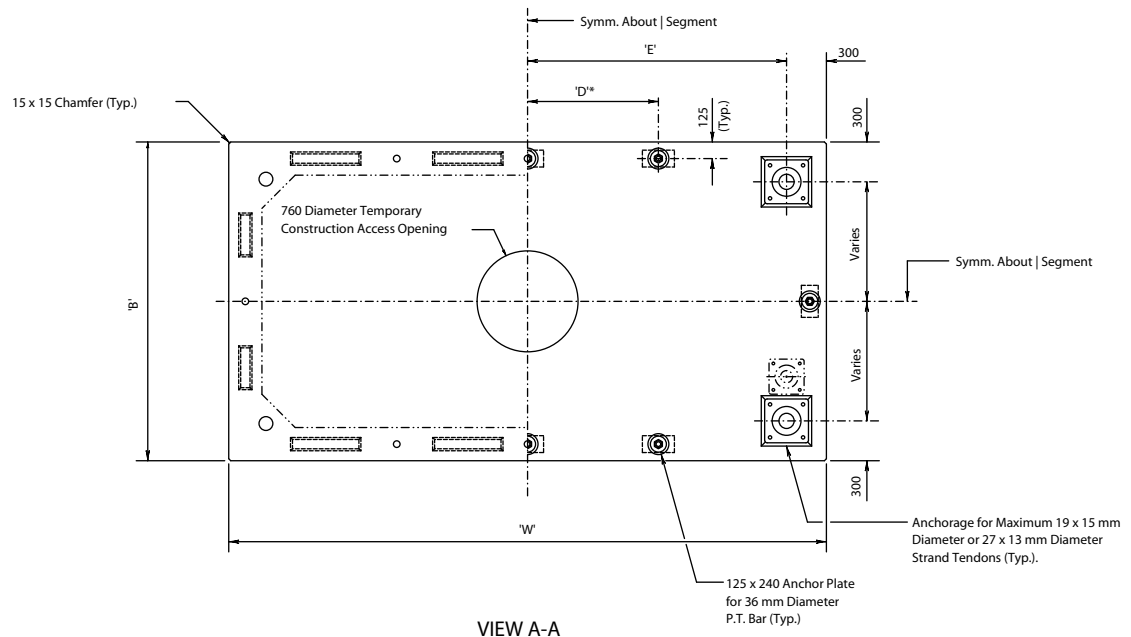


ELEVATION



VIEW A-A

Section Type	'W' (mm)	'B' (mm)	'D' (mm)	'E' (mm)
1800-1	4020	1800	865	1730
1800-2	4260	1800	925	1850
1800-3	4500	1800	985	1970
1800-4	5220	1800	1165	2330
1800-5	5460	1800	1225	2450
1800-6	5700	1800	1285	2570
2400-1	3540	2400	745	1490
2400-2	3780	2400	805	1610
2400-3	4020	2400	865	1730
2400-4	4260	2400	925	1850
2400-5	4500	2400	985	1970
2400-6	4740	2400	1045	2090
2400-7	4980	2400	1105	2210
2400-8	5220	2400	1165	2330
2400-9	5460	2400	1225	2450
2400-10	5700	2400	1285	2570

NOTES:

- ① Duct is Not Present for Segment Widths ('W') of 4020 mm or Less.

GENERAL NOTES

- For Shear Key and Duct Dimensions and Locations, See Box Pier Segment Dimensions Sheet.

PROPOSED AASHTO - PCI - ASBI SEGMENTAL SUBSTRUCTURE STANDARDS

FOR SPAN-BY-SPAN AND BALANCED CANTILEVER CONSTRUCTION SPANS 30.5 TO 61.0 METERS

BOX PIER CAP SEGMENT DIMENSIONS